



Kiaro Skin

OPENING
SYSTEMS
FOR LIFT
UP AND
DROP
DOWN
DOORS



Weitere Info unter: <https://www.lignoshop.de>



SYMBOLS AND FINISHES LEGEND

SYMBOLS



= SHELF SAFELY LOCKED DURING TRANSPORTATION AND AT HOME.



= ANTI-TURNOVER LOCKING SYSTEM



= NORMS / PATENTS



= PHILLIPS / POZIDRIV



= WITH BUFFER



= PART NO.



= BLADE SLOT



= WITH MAGNET



= PCS. PER PACKAGE



= COMBI SLOT



= NEWTON



= CAPACITY LOADING



= HEXALOBULAR SOCKET



= FRICTION



= WOOD / GLASS THICKNESS



= COUNTERSUNK HEAD



= AUTOMATIC



= HOLE DIAMETER



= PAN HEAD



= DROP DOWN



= DIAMETER



= FLANGE HEAD



= STANDARD HINGE



= LENGTH



= FLAT HEAD



= KIMANA HINGE



= HEIGHT



= TRILOBULAR SCREW



= FLAP HINGE



= RIGHT VERSION



= SELF-TAPPING SCREW



= WITH SPRING



= LEFT VERSION



= EURO THREAD



= WITHOUT SPRING



= SETTING CODE



= METRIC THREAD



= REVERSED SPRING



= PCS. PER PAD



= PRE-INSERTED SCREW



= CUT ON REQUEST



= PRE-INSERTED SCREW AND SPREADING BUSH



= WITH FLANGE



= SELF ADHESIVE

NOTE: Printing errors and omissions may exist despite our best efforts to ensure accuracy. We reserve the right to alter specifications without notice.

Weitere Info unter: <https://www.lignoshop.de>

MATERIALS

ZA = Zinc Alloy	ST = Steel	HSS = High Speed Steel	BR = Brass	ABS = Acrylonitrile Butadiene Styrene
ZAnk = Nickel-plated Zinc Alloy	STzk = Zinc-plated Steel	AL = Aluminium	WD = Wood	EVA = Ethylene Vinyl Acetate

EP = ENGINEERING PLASTIC	+ EP = other engineering plastic available on request	SR = SOFT RUBBER	+ SR = other soft rubber available on request
--	--	--------------------------------	--

EPn = Natural Engineering Plastic	EPc = Clear Engineering Plastic	SRn = Natural Soft Rubber
EPw = White Engineering Plastic	EPg = Grey Engineering Plastic	SRw = White Soft Rubber
EPwg = Water Green Engineering Plastic	EPa = Anthracite Engineering Plastic	SRb = Black Soft Rubber

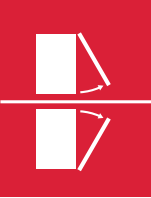


FINISHES



+ **OTHER FINISHES AVAILABLE ON REQUEST**

PART NO.	FINISHES	PART NO.	FINISHES	PART NO.	FINISHES
00	Insignificant finish	IF	Middle Grey	RO	Red
AA	Natural	IJ	Light Grey	UT	T-Met 9007
AB	White	IL	Grey 20	UZ	T-Met
AE	White 9010	IN	Grey met. 26	WA	Bronzed
EA	Black	JB	Bright Aluminium	WI	Burnished
EC	Matt Black	JC	Aluminium - Chrome	XD	Satin-finished Steel
EE	Anthracite	JD	Matt Aluminium	YA	Nickel-plated
EW	Grey 9007	JE	Satin-finished Aluminium	YB	Bright Nickel-plated
FU	Gunmetal	JF	Aluminium - Brass	YC	Matt Nickel-plated
FV	Gunmetal V52	JG	Aluminium 5	YD	Satin-finished Nickel-plated
GR	Raw	JL	Aluminium PE 11	YQ	Black Nickel
HA	Brass-Plated	JM	Aluminium RAL 9006	Z9	Black Zinc
HH	Tropicalized	KA	Chrome	ZA	Zinc alloy
HL	Raw Brass	KB	Bright Chrome	ZN	Zinc-plated
HX	Graphite	KC	Matt Chrome	ZO	Bright Gold
IA	Grey	LD	Brown 8019	ZY	Titanium
IB	Metallic Grey	NN	Metallic Beige	ZZ	Clear



OPENING
SYSTEMS FOR
FLAP AND
DROP DOWN
DOORS

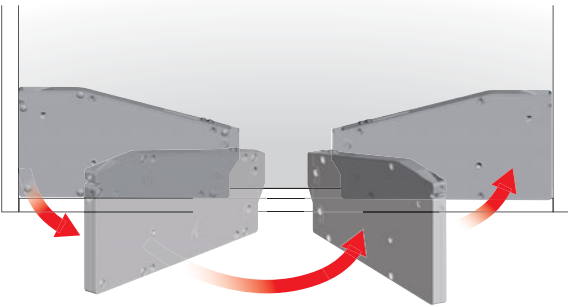
KIARO SKIN

ITALIANA
ferramenta

KIARO SKIN

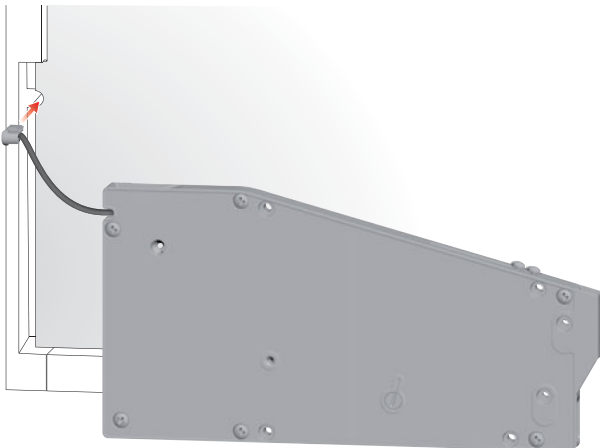


UNHANDED MECHANISM

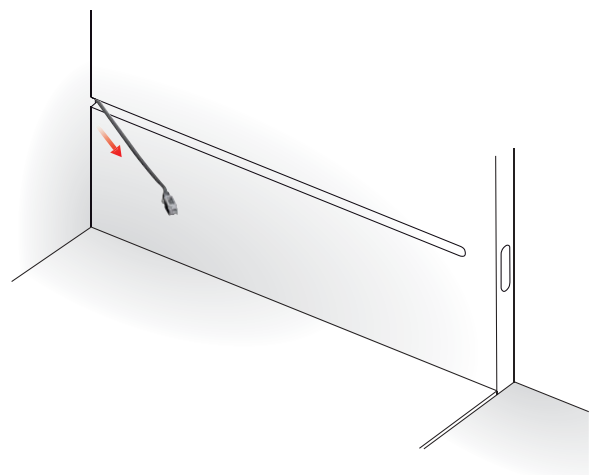


MECHANISM INSTALLATION

STEP 1



STEP 2



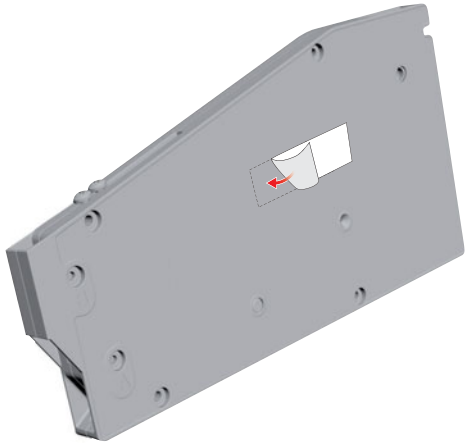
Weitere Info unter: <https://www.lignoshop.de>



MECHANISM FIXING

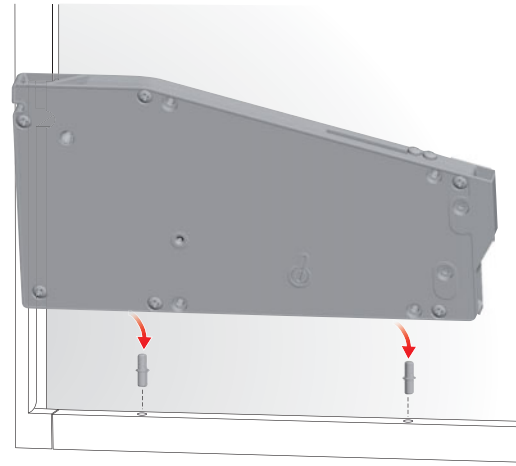
STEP 1

Stick on the back of the mechanism a double-sided tape. (NOT INCLUDED)

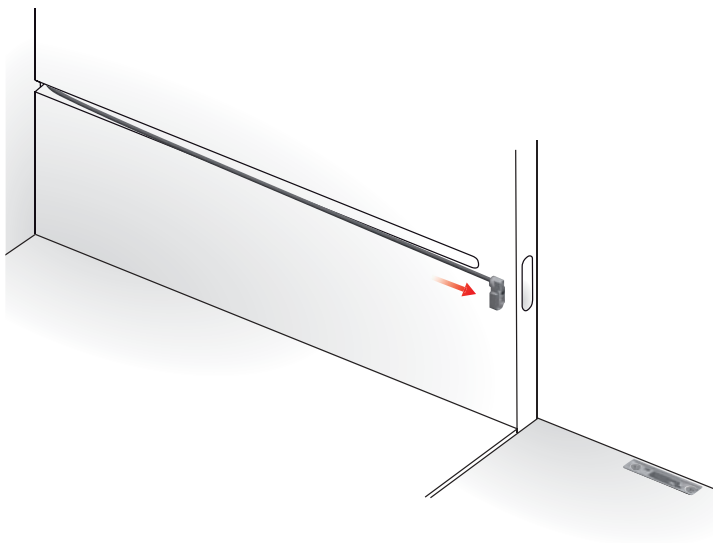


STEP 2

Fix the mechanism onto the cabinet by using the provided pins.

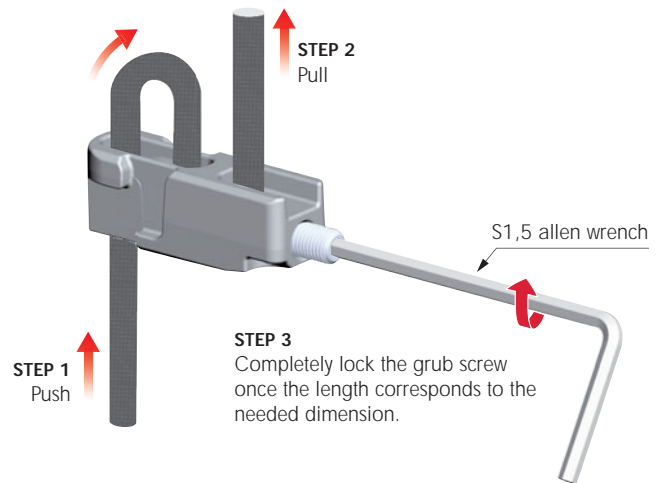


WIRE CUTTING

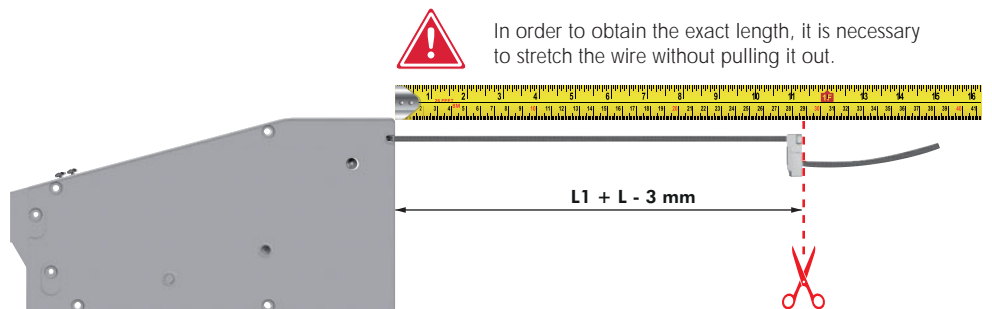
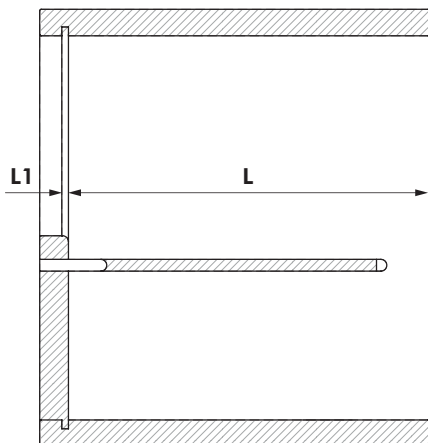


INSTRUCTIONS FOR WIRE CUTTING

INSERTION OF THE WIRE INTO THE END PART AND LOCKING WITH M3 GRUB SCREW

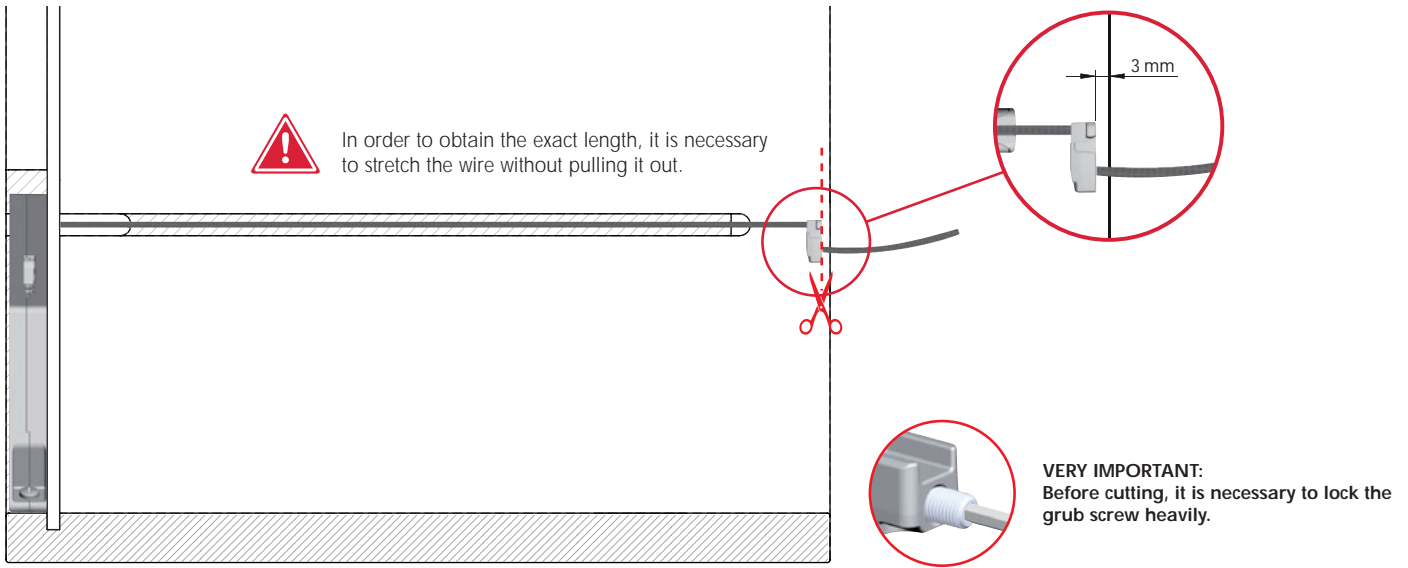


WIRE CUTTING WITH UNMOUNTED MECHANISM

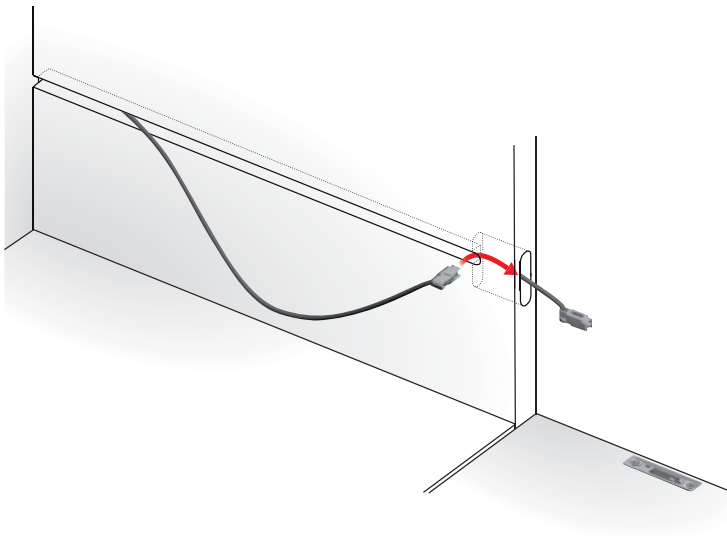


VERY IMPORTANT:
Before cutting, it is necessary to lock the grub screw heavily.

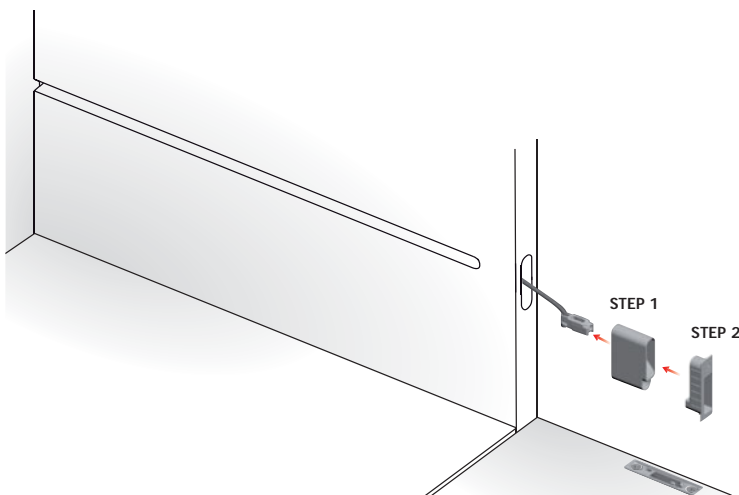
WIRE CUTTING WITH MOUNTED MECHANISM



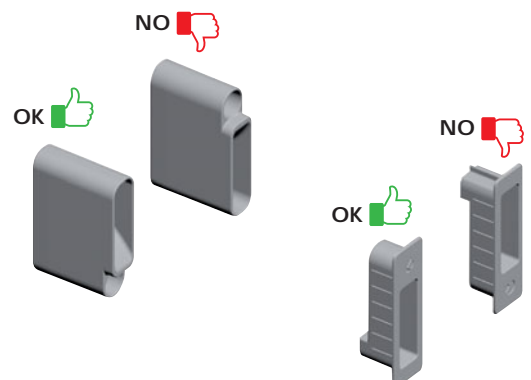
WIRE INSERTION ON THE SIDE MILLING



POSITIONING OF THE FRONTAL HOUSING INTO THE FRONT MILLING OF THE CABINET SIDE



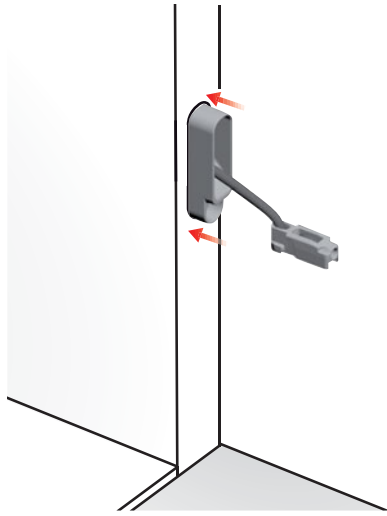
Before positioning the frontal housing into the front milling of the cabinet side, it is recommended to verify its right direction.





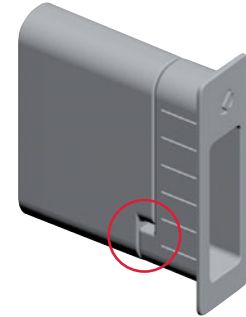
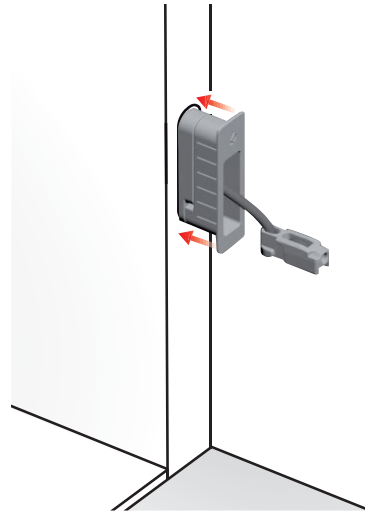
STEP 1

Insert partially the frontal housing.



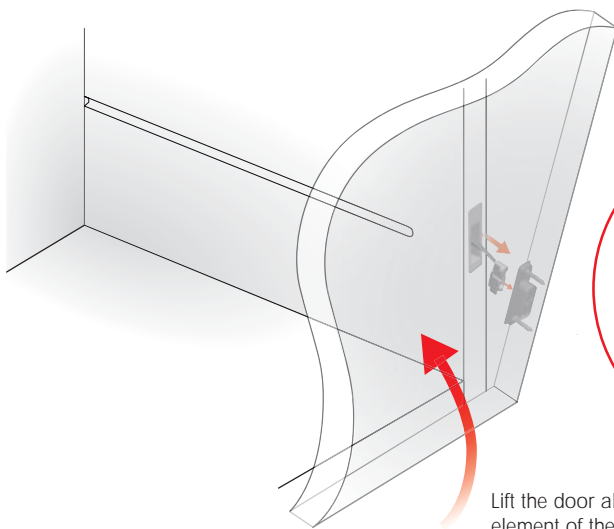
STEP 2

Complete the insertion by using the cover of the frontal housing.



The recess of the two pieces makes the insertion into the front milling of the cabinet side easier.

WIRE INSERTION ONTO THE DOOR BRACKET



Lift the door almost completely to slot the end element of the wire into the door bracket.

STEP 1



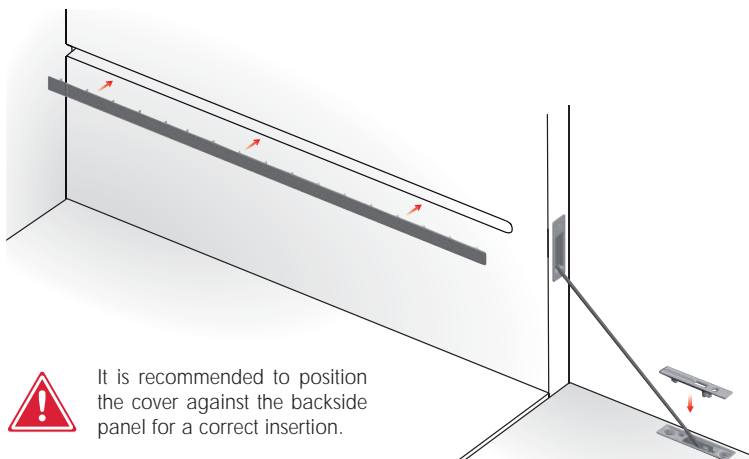
STEP 2



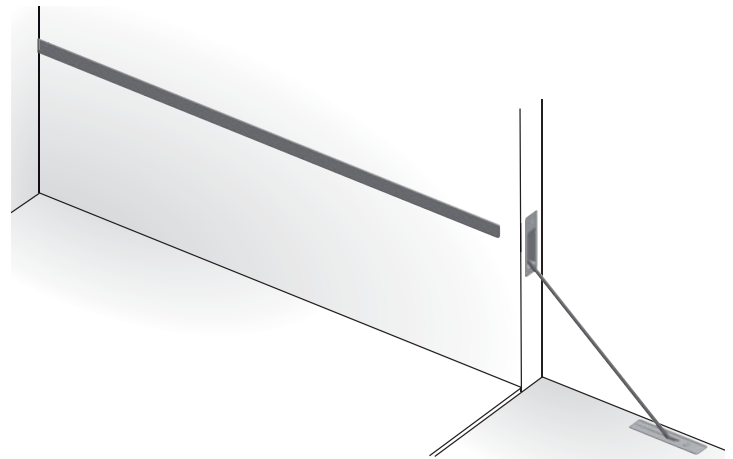
click



COVER CAPS INSERTION

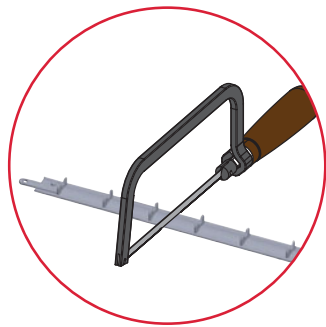


It is recommended to position the cover against the backside panel for a correct insertion.

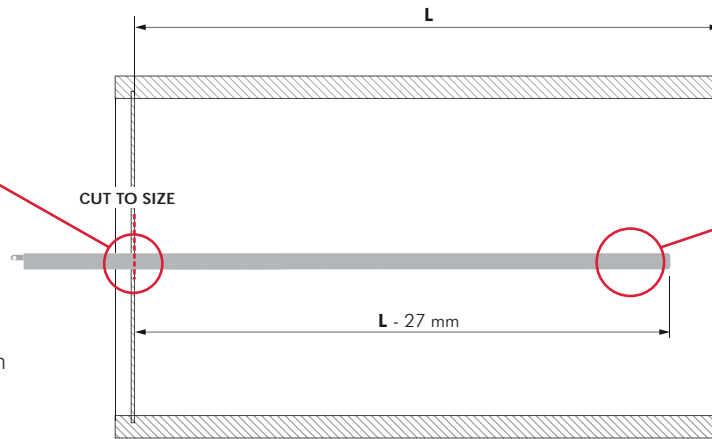


RULES FOR SIDE COVER CUT TO SIZE

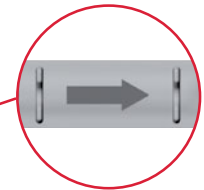
SIDE COVER CUT TO SIZE



It is recommended to use an hacksaw to cut the cover.



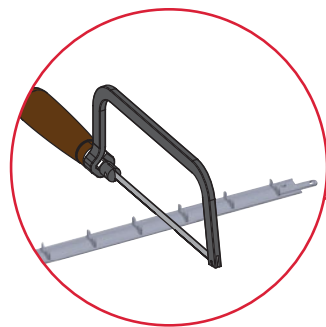
Pay attention to the arrow on the backside of the cover before to cut it. The arrow specify the external side of the cabinet.



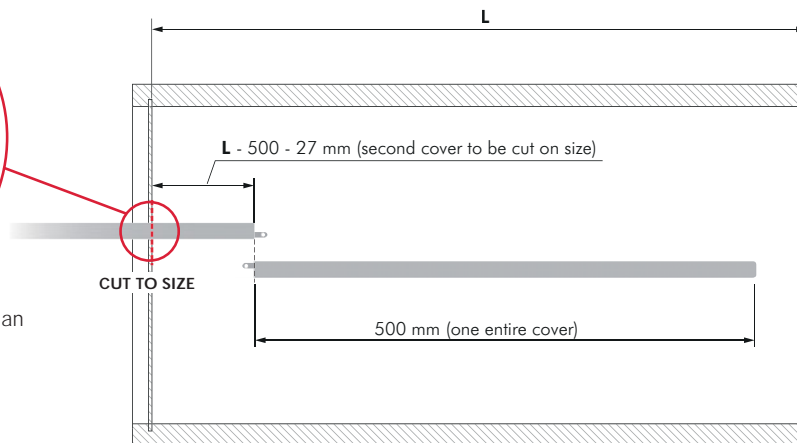
SIDE COVER CUT TO SIZE FOR CABINET INTERNAL SPACE (L) > 527 mm



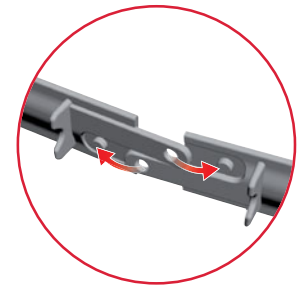
It is necessary to order 2 covers.



It is recommended to use an hacksaw to cut the cover.

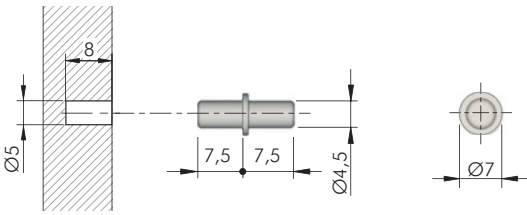
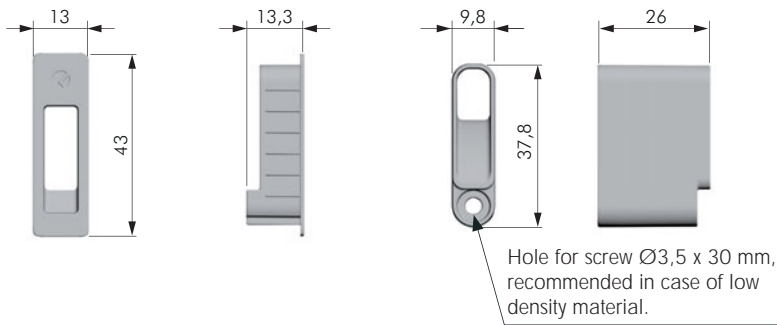


COVERS JUNCTION
Make the junction before to apply the cover on the cabinet.

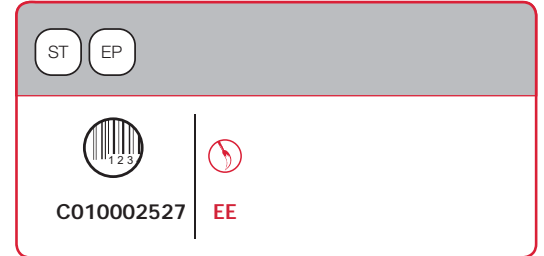
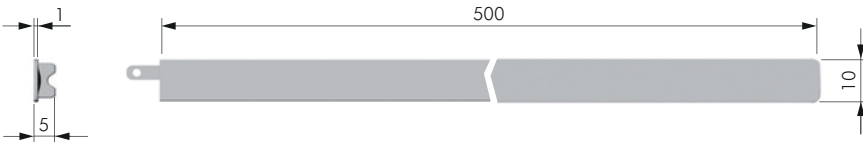




KIARO SKIN SIDE SUPPORTS



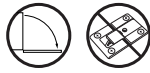
KIARO SKIN SIDE COVER



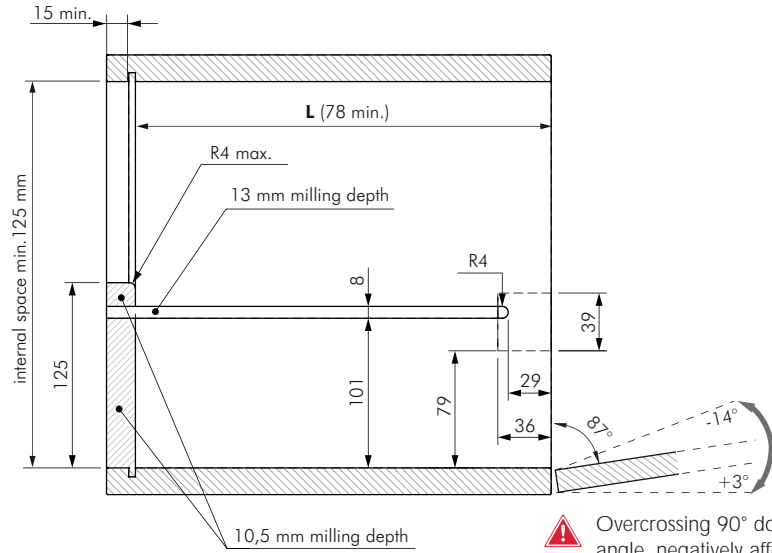
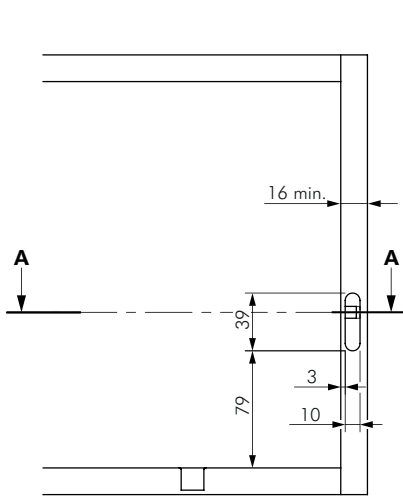
NOTE: the set includes all the components shown in the picture.



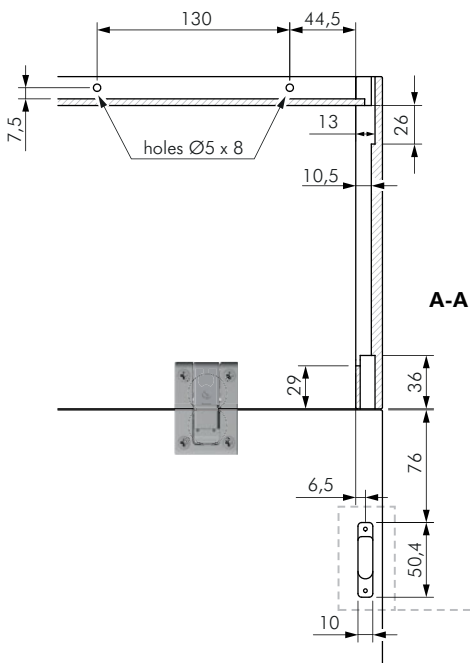
KIARO SKIN WITH KIMANA HINGE



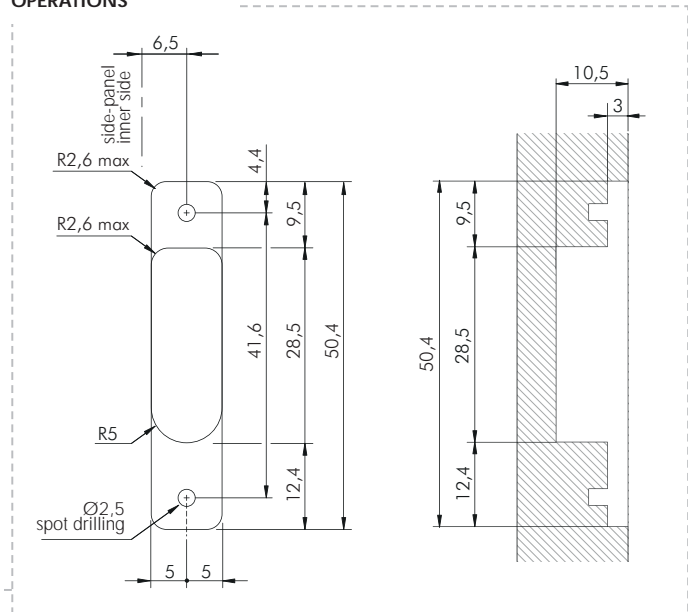
SIDE-PANEL DRILLING OPERATIONS



⚠ Overcrossing 90° door opening angle, negatively affects the Kimana hinges.

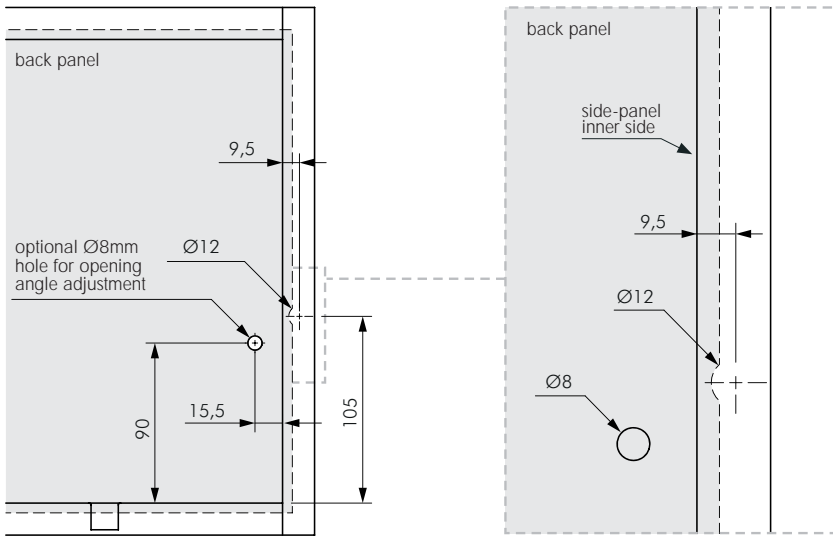


DOOR PANEL DRILLING OPERATIONS





BACK-PANEL DRILLING OPERATIONS

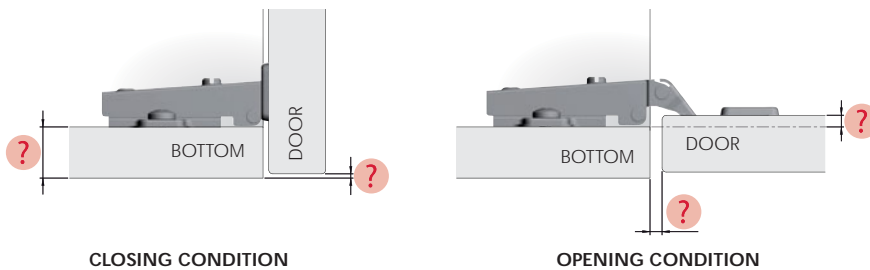


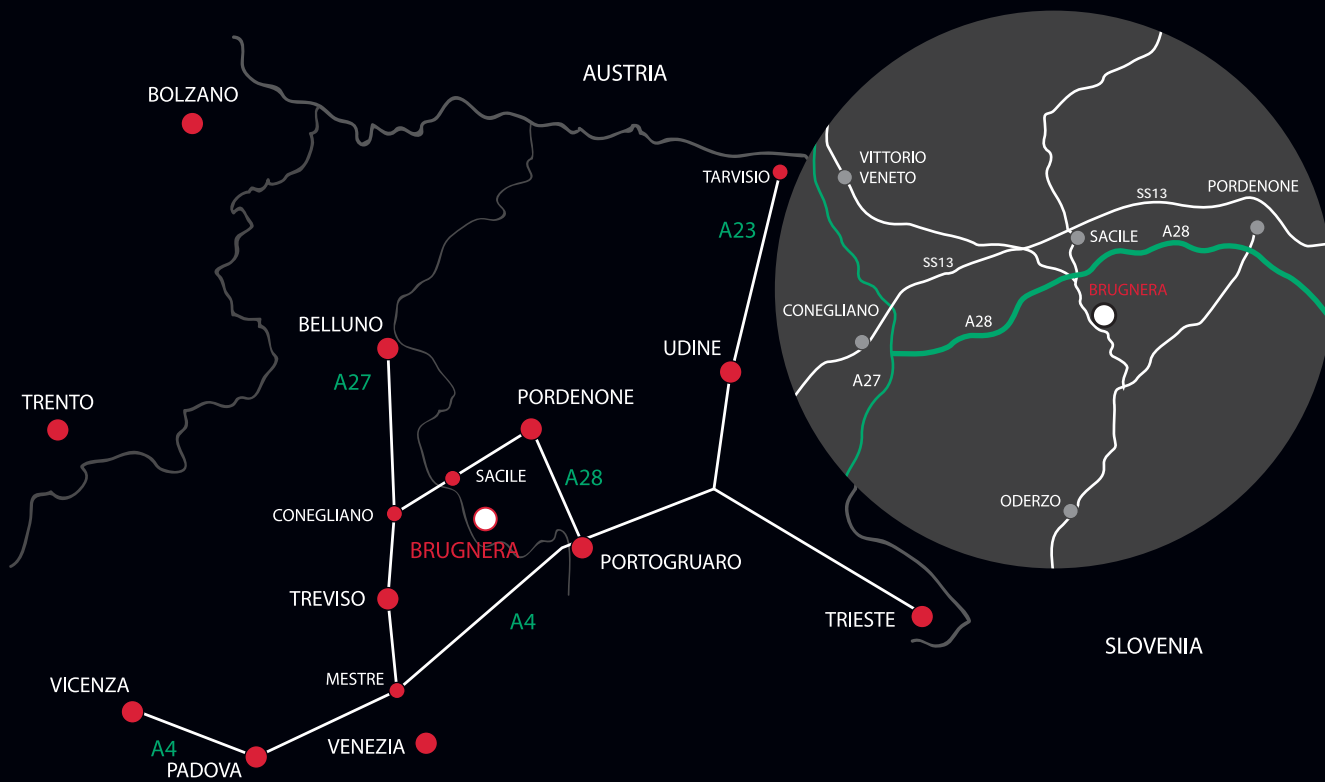
In case of door without handles it is recommended to use **K Push Tech with buffer**.

KIARO SKIN WITH STANDARD UNSPRUNG HINGES



In case the hinges to be installed are not KIMANA hinges, please contact our technical department to receive the correct drilling plan. It is necessary to indicate all the values requested in the following diagram:





www.italianaferramenta.it